

THIS DRAWING IS BASED ON DIMENSIONAL SURVEY INFORMATION PROVIDED BY OTHERS. THE ARCHITECT CANNOT ACCEPT RESPONSIBILITY FOR THE ACCURACY OF THIS SURVEY INFORMATION.

THIS DRAWING SHOULD BE READ IN CONJUNCTION WITH ALL RELEVANT DRAWINGS, SPECIFICATIONS, SCHEDULES AND OTHER CONTRACT INFORMATION ISSUED BY THE ARCHITECT, STRUCTURAL ENGINEER, SERVICES ENGINEER AND ANY OTHER CONSULTANT EMPLOYED OR RETAINED BY THE EMPLOYER IN RESPECT OF THESE WORKS.

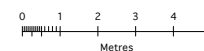
IN THE CASE OF NEW WORKS, ALL DIMENSIONS SHOWN ARE TO THE FACE OF MASONRY, METAL OR TIMBER STUD FRAMING, OR THE CENTRE LINE OF STRUCTURAL STEEL MEMBERS, UNLESS NOTED OTHERWISE.

DO NOT SCALE FROM THIS DRAWING.

REPORT ANY DISCREPANCIES, CONFLICTS, ERRORS OR OMISSIONS TO THE CA AND SEEK DIRECTIONS BEFORE PROCEEDING.

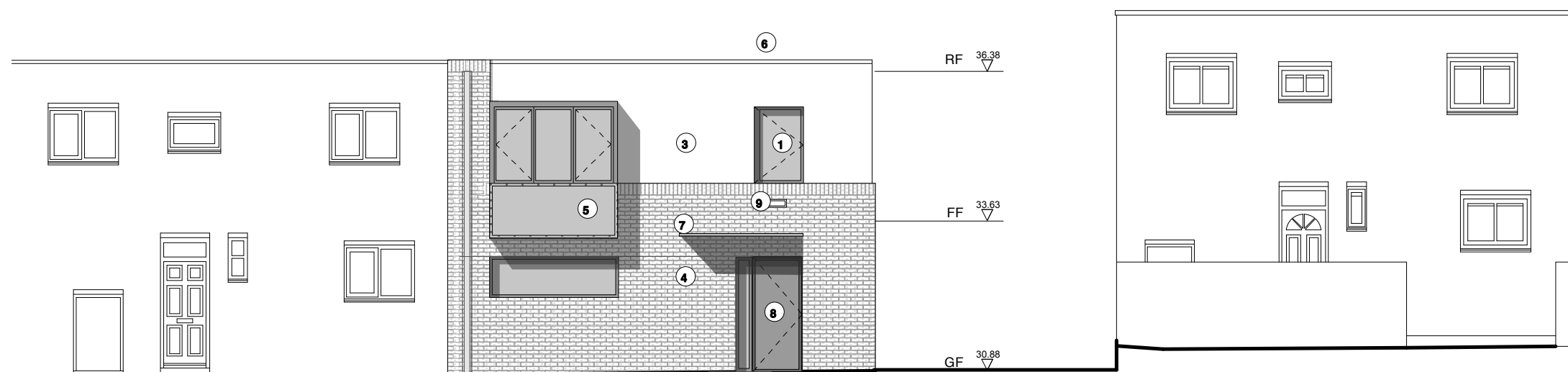
CONFIRM ALL DIMENSIONS AND LEVELS ON SITE PRIOR TO COMMENCING WORK. IF IN DOUBT ASK!

THIS DRAWING REMAINS THE COPYRIGHT OF **BURRELL FOLEY FISCHER LLP**

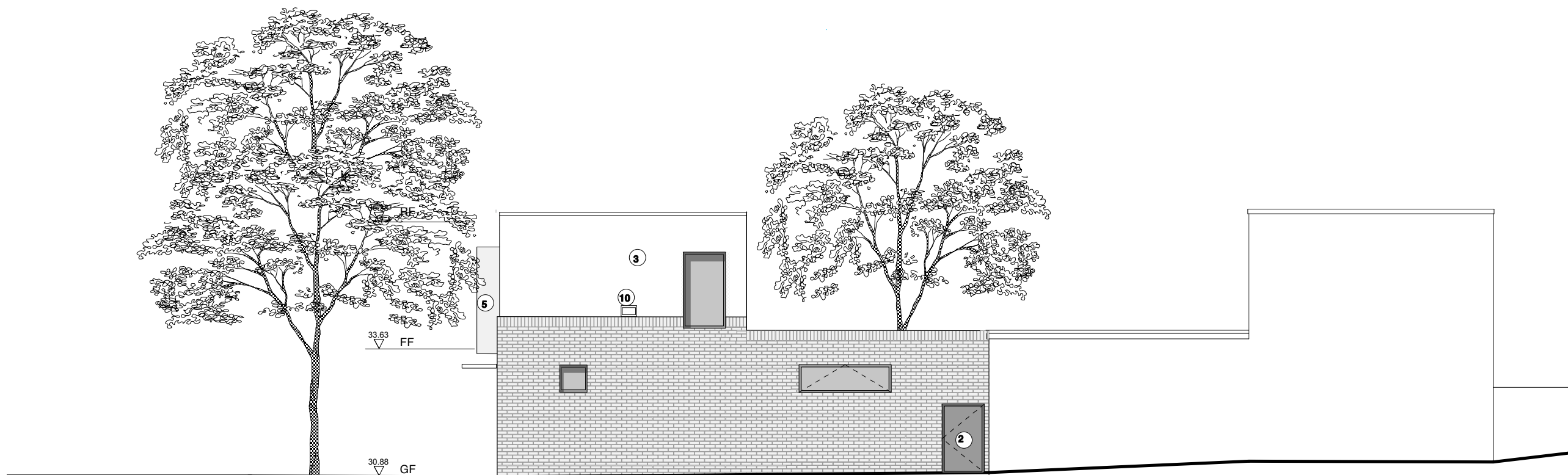


KEY TO MATERIALS

- ① METAL FINISH TIMBER FRAMED HIGH PERFORMANCE WINDOWS
- ② NEW METAL LOUVRED DOOR TO BIN STORE
- ③ RENDER FINISH
- ④ NEW FLUSH POINTED BRICK TO MATCH EXISTING
- ⑤ NEW TRESPA PANNELLING TO PROJECTING BAY
- ⑥ NEW PRESSED METAL COPING
- ⑦ NEW GLAZED PROJECTING CANOPY
- ⑧ METAL TIMBER FACED DOOR WITH SIDE LIGHTS
- ⑨ VANDAL RESISTANT SECURITY LIGHTING
- ⑩ NEW STREET LIGHT FIXED TO BUILDING



Elevation To Belfont Walk



Side Elevation

P2 FOR PLANNING EH HG 21.10.09
P1 FOR INFORMATION SR HG 10.09.09
REV NO: REV DETAILS: BY: CHKD: DATE:

PLANNING

DO NOT SCALE OFF THIS DRAWING

BURRELL . FOLEY . FISCHER . LLP

BURRELL FOLEY FISCHER ARCHITECTS & URBAN DESIGNERS
YORK CENTRAL 70-78 YORK WAY N1 9AG
TEL 020 7713 5333 FAX 020 7713 5444 E-MAIL mail@bff-architects.co.uk
WEB www.bff-architects.co.uk

JOB: HFI SITE 1 BELFONTS WALK

FOR: HOMES FOR ISLINGTON

AT: 5 Highbury Crescent LONDON, N5 1RN

DRAWING TITLE: PROPOSED ELEVATIONS

DATE: 16.10.09	SCALE: 1:100@A3
DRAWN BY: SR	CHECKED BY: HG
JOB NO: BFF/998	DWG NO: AP(O)220P2

Copyright ©

SCALE BAR

