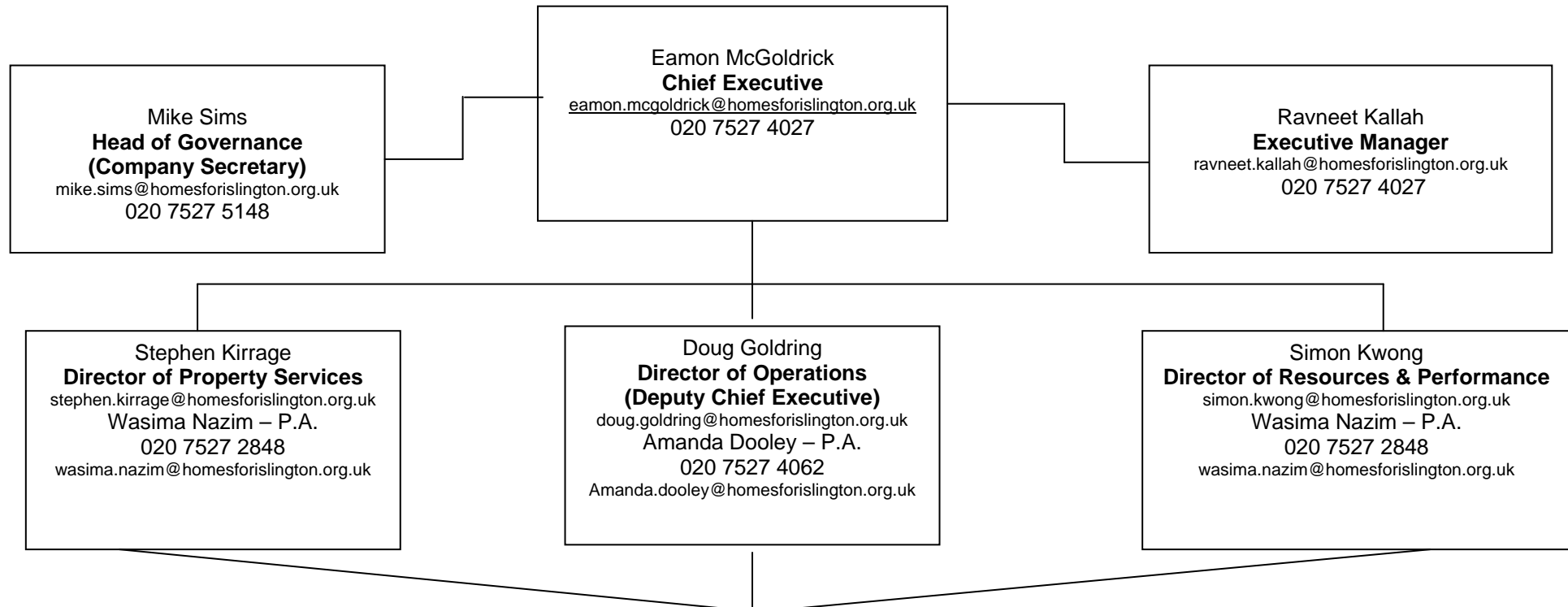


## Homes for Islington Divisional & Senior Management Structures



SEE OVER LEAF FOR DETAILS OF SERVICE RESPONSIBILITES

**Main postal Address: Homes for Islington, Highbury House, 4 - 5 Highbury Crescent, London N5 1RN**  
**All email addresses can be reached by typing the following for the person you wish to contact:**  
 firstname.surname@homesforislington.org.uk

## Service Responsibilities

### PROPERTY SERVICES

Based at Highbury House, 4 - 5  
Highbury Crescent, N5 1RN

Heads of Service:

**Engineering and Energy Management**  
Primesh Kalia

**Capital Programme**  
Christine Short

**Repairs & Maintenance**  
Matt West

**New Build & Regeneration**  
Martin Lippitt

### RESOURCES & PERFORMANCE

All based at Highbury House, 4 - 5  
Highbury Crescent, N5 1RN

Heads of Service:

**Finance & ICT**  
Anne Bagland

**Service Development & Communication**  
Simon James

**Human Resources & Performance**  
Shane Lynch

### OPERATIONS

All based at Highbury House, 4 - 5  
Highbury Crescent, N5 1RN

Doug Goldring

- Housing Investigations Team

Heads of Service (Operations)

Jon Farrant

- Old Street Area Housing Office
- Highbury House East Team
- Homeownership Team
- Estate Parking Team
- Estate Maintenance Team
- Special Projects Team

Garry Bates

- Holland Walk Area Housing Office
- Highbury House West Team
- Voids Quality Team
- Income Recovery Team
- Income Control Section & Former Tenants Section

Jo Knight

- Reception Centres
- Transfers Team
- HFI Direct Team
- Out of Hours Anti Social Behaviour Team
- Housing Support Team
- Facilities Team
- Customer Services Team